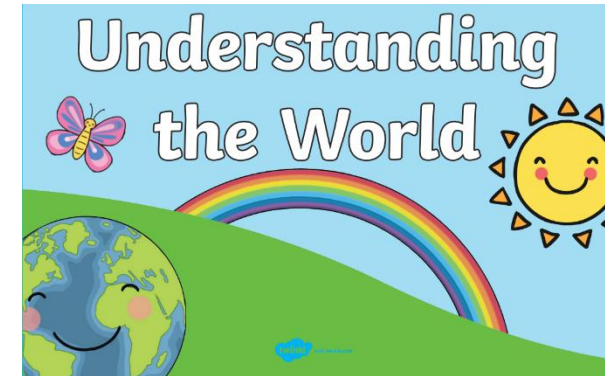




The Natural World



Environment	Observing changes	Exploring
Autumn walk – what can we see, hear, smell, touch?	Toasting bread	Using senses to explore our Forest School Area
Cloud gazing	Making popcorn	Tree rubbings
Making kites	Roasting marshmallows	Ice
Spring walk what can we see, hear, smell, touch?	Making smores	Bubbles
Colours of spring	Toasting crumpets	Floating
Recycling focus	Growing beans	Sinking
Bug and minibeast hunt	Growing cress	Making wind catchers
Camouflage activities	Making garlic bread	Magnets
Summer walk – what can we see, hear, smell, touch?	Throughout the year observing and drawing leaves and trees. Comparing changes.	Den building
<p>ELG – The Natural World</p> <p>Explore the natural world around them, making observations and drawing pictures of animals and plants. Know some similarities and differences between the natural world around them and contrasting environments, drawing on their experiences and what has been read in class. Understand some important processes and changes in the natural world around them, including the seasons and changing states of matter.</p>		