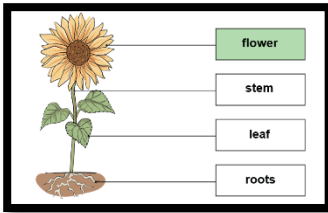


Year 3

Summer

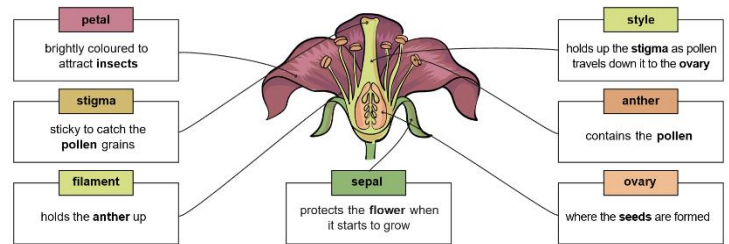
Science - Plants

In this unit, children will build upon their previous knowledge of plants and trees from Year 2 where children find out what plants need to stay healthy once they have grown. They will identify and describe the functions of the different parts of plants and explore what plants need for life and growth. Children will then complete an investigation to see how water is transported through plants. Children will also look at seeds and explore the different ways that plants disperse their seeds.



Key Knowledge

- To identify and describe the functions of different parts of flowering plants: roots, stem/trunk, leaves and flowers.
- To explore the requirements of plants for life and growth (air, light, water, nutrients from soil, and room to grow) and how they vary from plant to plant.
- To investigate the way in which water is transported within plants.
- To explore the part that flowers play in the life cycle of flowering plants, including pollination, seed formation and seed dispersal.



Key Vocabulary

Bulb - A fleshy base of a plant that can grow another plant.

Dispersal - To distribute or spread over a wide area.

Flower - The seed-bearing part of a plant that is usually surrounded by brightly coloured petals.

Formation - To create.

Leaf - The part of a plant that is typically flat and hangs off the stem.

Nutrients - Something that provides nourishment to a living thing.

Pollination - The transfer of pollen to allow fertilisation.

Roots - The part of the plant that attaches into the ground for support and nutrient collection.

Seed - A small part of a plant that can grow another plant.

Stem - The main stalk of a plant.

Tree - A woody plant.

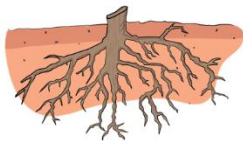
The roots have **different jobs**:

They take up **water** and **nutrients** from the soil.

They keep the plant **steady**.

They keep the plant **upright**.

They "**anchor**" the plant.



The job of the **stem** is to transport **water** and **nutrients** from the soil to the leaves, flowers or fruit through tiny, thin tubes called the **xylem**.



Key Question

How does each part of the plant fulfil its function?